



# Beef Showmanship

## Guidelines

*In showmanship, you are judged on your ability to control and present an animal to bring out its best characteristics. The first step is preparation. Putting your time and effort into training and halter breaking your animal to lead and stand correctly before stepping hoof on a trailer, should be your first priority.*

### Equipment:

**Leather Show Halter** - The leather show halter is used in the show ring to give a professional presentation of your animal. Make sure that it is the correct size for your animal (there is a difference between the size of calf and yearling halters). When on the animal head the nose band should be half way between the eyes and the muzzle. Your halter should be cleaned and shined and the lead strap when hanging down with the animals head held up should barely graze the ground and be cut 5-6 inches higher (\*This is to avoid tripping and getting tangled up).

When leading your animal the shank should be held tightly close to your animals head with your right hand so that you can feel all movements of your animal. The remainder of the shank can be either left to hang so that you have one hand on the halter or held by the left hand with the cane. Judges opinion can differ on the proper way; the member should lead their animal the way that they feel most comfortable. (\*Never coil or loop the lead strap around your hand, as it is dangerous and does not look professional).

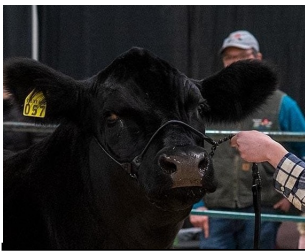
**Scotch Comb** - Comb should be carried in your back right-hand pocket with the teeth of the comb facing inwards to the showman's body. The comb is used to place the hair back into place after the judge has run their hands over the animals hide.

**Show Stick** - The show stick is used to place the animals hind fit. When walking, the cane is held in the left hand by the grip, perpendicular with the pointed end downwards to the ground. Your cane should be chin height or long enough for you to reach the back legs of your animal while standing at its head.



### Showing Procedures

- Circle the ring clockwise at a brisk walk, with your animals head up to show alertness
- While leading the animal, the showman walks on the left hand side of the animals head, so that the judge will have a full side profile view of the animal.
- It's important to keep one eye on the judge (and ringmaster) and the other on your animal at all times. A good showman knows where both the judge and ringmaster are at all times. Always be looking for hand signals or other directions.
- When the judge motions for you stop, switch the lead strap into your left hand and the cane into your right and begin to set up the animals legs. Keep a straight line and the animals head up.
- Always leave several feet between yours and the next animal so that the judge can freely move around the line up to see your animal as well as fellow competitors.
- You can place your animals feet with pressure on the halter combined with the use of your show stick. Pushing back or pulling forward on the halter will cause the animal to move its feet alone, due to the change in weight distribution. The cane is an aid to help you placing feet.
- When lined up side by side as when you are being placed, your animal legs should be square.



# Beef Showmanship Guidelines

## Showing Procedures continued...

When stopped in the ring, or lined up head to tail, your animal should be “Side Profiled”. This means that the back hind leg on the showman’s side should be placed ahead a bit. When the judge looks at your animal it should look like Figure 4.

Find a spot along the underside of the calf and **slowly and gently** scratch the animal with the show stick. Be calm! Increase the pressure when the judge is looking if the animal has a weak top as this will keep the animals back from sagging.

When the judge approaches it is important to at all times allow for full view of the calf from where ever they are standing. Keep your animals feet positioned and the head held up and pointing straight ahead.

Be prepared to answer questions about your animal. (Questions may include, birth date, sire, dam, breed, weight, best physical quality of your calf, worst physical quality and what you are doing as a showmen to fix it)

After the judge moves on to the next animal, comb hair back into place if and only if it was touched, and make sure the animal is still set up properly.

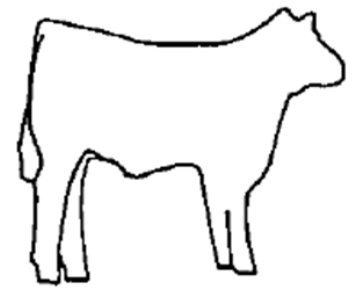
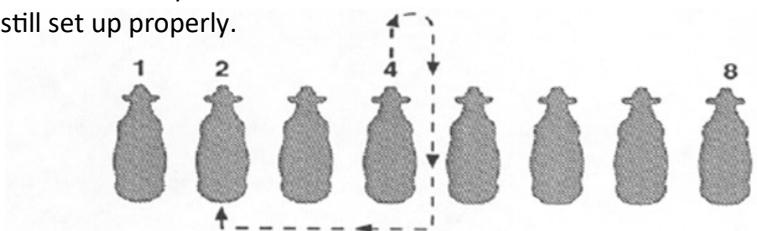


Figure 4. (Judges View)  
Set up when viewed on the “Side Profile”

## Lining Up

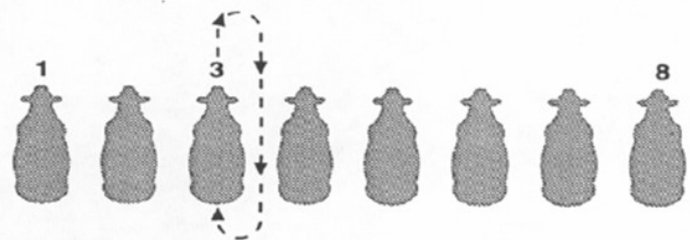
When the judge motions your placement, proceed promptly to line up, and pull in so that you are even with the animals placed, making sure that you leave lots of space between you and the animal above you. (So the judge can walk around and you are able to easily place your animal’s feet).

When instructed to change place in line, lead out forward and turn the animal right. Learn the below figures 5 - 8 to know the correct direction to take.



1. How to switch from position 4 to position 2.

Figure 4 Switching placings in a Beef Showmanship class



2. How to reset in the same position using position 3.

Figure 5 Repositioning your animal in a Beef Showmanship class



3. How to go from position 2 to position 7.

Figure 6 Switching positions in a Beef Showmanship class

**REMEMBER** > Members are responsible for care, preparation and exhibition of 4-H project animals. 4-H club leaders and/or parents should be on hand to assist members should they encounter difficulties; however, SHOULD NOT perform duties which members can do themselves.

Showmanship information for this guide extracted from 4-H Nova Scotia 4-H Livestock Showmanship Guide.